

## Shelley Model Birds

The first known example of a china bird comes from 1904 a miniature Goose (number 63 9cm). But the crested miniatures were not really model birds - that came about first with the small china series illustrated here. Twelve of these were registered in 1915. The series developed to Number 27, and there are still some numbers to be found. Sizes are in the range 5cm to 7cm high.

The large birds don't have Registered Design Numbers. They were labelled with the slightly academic title "Bird Studies". Distinctions between "pre-war" and post-war" (i.e. WWII) are often made, partly because either a different mix or mould must have been used in the later period creating a smaller model. Sizes are in the range 10cm to 20cm high.

The choice of birds to model goes beyond those originating in England. The majority of the figurines are exotic species from all parts of the world. For example the small series included number 25 "Cock Of Rock" or Turaco.

We don't know whether bird decoration appeared in the pattern books, and there are interesting variants in the colourways to be found on models.

This collection amounts to 80. If you have any examples not included here, please send details and images to [information@shelley.co.uk](mailto:information@shelley.co.uk)

Chris Watkins 2019

### Large series: 14 models, 40 variants

Scale 50% approx.



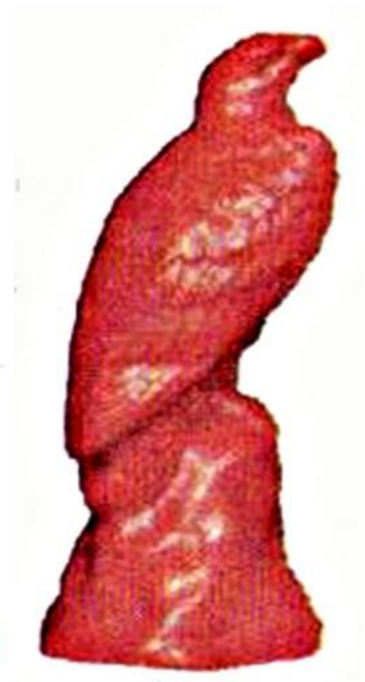
01 Lovebird or  
Budgie (19cm)

02 Blue Macaw (20cm)

03 Parrot (20cm)



04 Jay - pre-war (20cm)



05-Golden Eagle (18cm)



05 Eagle (18cm)



06 Green Woodpecker (19cm)



06 Spotted Woodpecker (19cm)





07 Kingfisher (20cm)



08 Toucan (20cm)



11 Wild Duck (12cm)



12 Pockard Duck (12cm)



13 Bull Finch (13cm)



14 Pied Flycatcher (10cm)

15 Woodlark (10cm)

? Meadowlark (10cm)

? Wheat Ear (11cm)

? Green Bunting (11cm)



16 Cole Tit (10cm)

17 Blue Tit (10cm)



U- Kingfisher (21cm)



U- Kingfisher (? cm)

**Small series 24 models, 40 examples**  
Scale 100% approx.



01 Rock Manakin (7cm)



02 Shield Duck (5cm)



03 Blue Creeper (6cm)



04 Scarlet Oriole (7cm)



05 Parakeet (7cm)

06 Prairie Hen (6cm ?)



07 Crested Shrike (7cm?)

08 Hornbill (6cm)



09 Wax Wing (7cm)



10 Cardinal Finch (7cm)



11 Spotted Woodpecker (5cm)



12 Kingfisher (6cm)



18 Parakeet (? cm)



18 Parakeet (? cm)







19 Cardinal Finch (7cm)



20 Yellowbreasted Green Finch (6cm)



21 Dove (7cm)



22 Canvas Back Duck (5cm)



23 Wild Duck (5cm)



24 Eastern Bluebird (6cm)





25 'Cock-of-Rock' /Turaco (7cm)



27 Canary? (7cm)

**Crested Miniature Birds - 5 models, 7 examples**  
Scale 100% approx.



Aylesbury Duck (5cm)



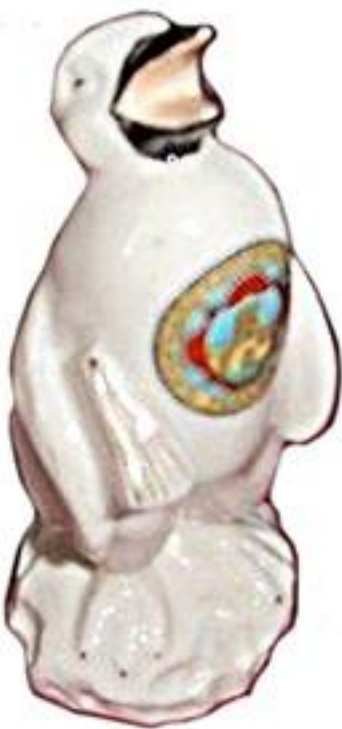
27 Canary? (7cm)



Miniature 63 Goose (9cm)



Miniature 327 Swan (8.5cm)



Miniature 384 Penguin (10cm)

With thanks to Chris Davenport. Gerry Pearce, Bruce Sandie, Bruce Till, Peter Porrazzo, Vernie Doyle

Chris Davenport (1994) Shelley Twitching, *Shelley Magazine*, 32: 12-13

Chris Davenport (1994) Shelley Twitching II, *Shelley Magazine*, 34: 4

Chris Davenport (1996) Shelley Twitching III, *Shelley Magazine*, 41: 4  
Bryan Goodlad (1998) "We're Twitching Again" *Shelley Magazine* 49: 4  
Helene Elder (2000) More Shelley Birds for the Aviary, *Shelley Magazine*, 56: 15, 16  
Mannie Banner (2001) lovebird/parrot *Shelley Magazine* 59: 17  
Curt Leiser (2001) "Newsletter "Going to the Birds?". *NSCC*, 12:2, 1-10  
Tony Kent (2007) "Birds of a Feather" *ASCC Shelley Newsletter*, 21:4, 1-4  
Tony Kent and David Deller (2012) "Shelley Birds" *Shelley Magazine*, 103, 18-20  
Steve Palmer (2016) "Dawn Chorus" talk at Annual Weekend